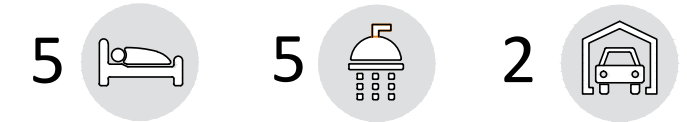
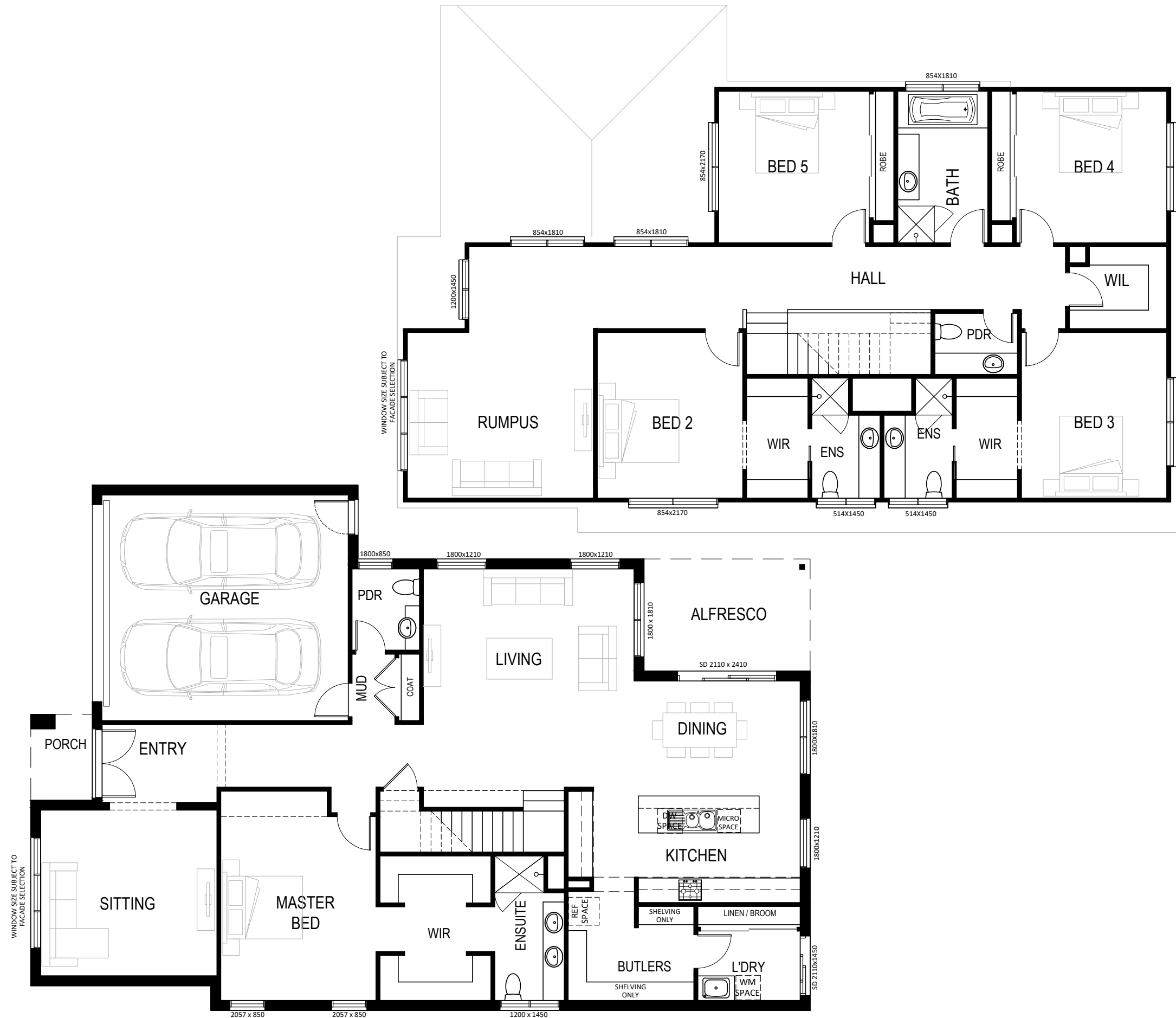


MILLER 40



Master Bed	3.8 x 4.5
Bedroom 2	3.6 x 4.0
Bedroom 3	3.6 x 4.0
Bedroom 4	3.6 x 3.7
Bedroom 5	3.7 x 3.7
Living	5.1 x 3.8
Dining	4.1 x 2.8
Sitting	4.3 x 4.0
Rumpus	4.5 x 4.0
Alfresco	4.0 x 2.6
Garage	6.0 x 5.5



AREAS:			
GROUND FLOOR:	161.9 m ²	GARAGE:	36.2 m ²
FIRST FLOOR:	156.9 m ²	PORCH:	3.1 m ²
	0.0 m ²	ALFRESCO:	11.0 m ²
	0.0 m ²		0.0 m ²
SUB TOTAL:	318.8 m ²	TOTAL:	369.1 m ²
	34.3 sq		39.7 sq

Total House Length	19.00 m
Total House Width	12.80 m
Minimum Lot Width	14.00 m

Dimensions are approximate only.



WWW.SIENNAHOMES.COM.AU

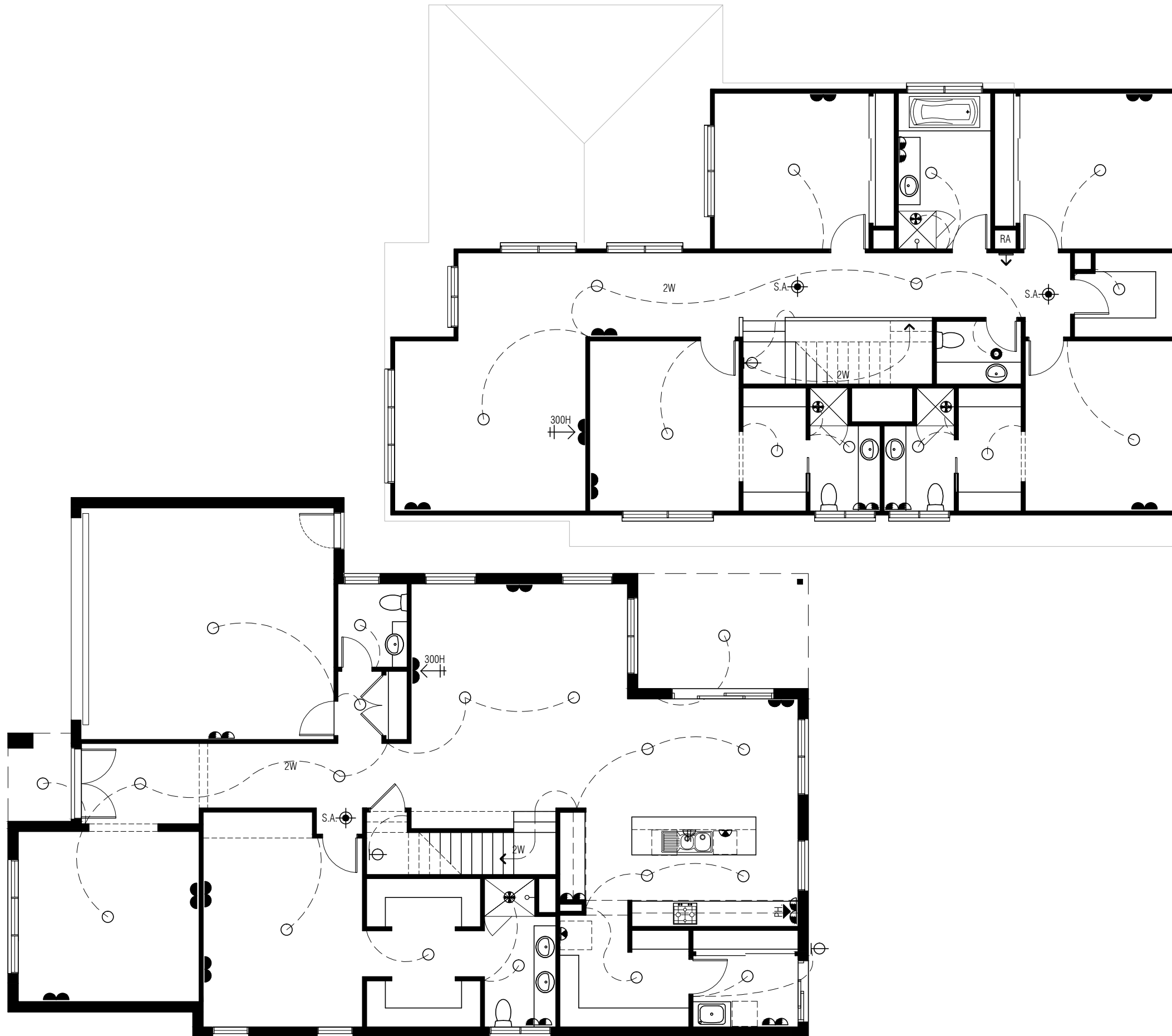
Sienna Building Pty Ltd - ABN 66 128 617 532 owns Copyright of this design any reproduction in whole or part without consent is forbidden.

This Brochure is for marketing purposes only and should be used as a guide only. Verve specification shown, please refer to your contract specifications or speak to your Sales Consultants for full inclusion details.

Sienna Building Pty Ltd reserves the right to amend product design, specifications and pricing without notice.

ISSUE DATE: MARCH 2018

MILLER 40



Sienna Building Pty Ltd - ABN 66 128 617 532 owns Copyright of this design any reproduction in whole or part without consent is forbidden.

This Brochure is for marketing purposes only and should be used as a guide only. Verve specification shown, please refer to your contract specifications or speak to your Sales Consultants for full inclusion details.

Sienna Building Pty Ltd reserves the right to amend product design, specifications and pricing without notice.

ISSUE DATE: MARCH 2018

LIGHTING & FITTINGS			
	CEILING LIGHT OUTLET WITH ACRYLIC SHADE.		
	PENDANT LIGHT AS SPEC.		
	CEILING LIGHT WITH SPEC. FITTING.		
	LED (FIXED) DOWNLIGHT.		
	WALL LIGHT AS SPEC..		PARAFLOOD WITH SENSOR.
	STAIR LIGHT		
	DOUBLE PARAFLOOD LIGHT WITH SENSOR.		
	1200 FLURO.		JUNCTION BOX (IN CEILING)
	MOTION SENSOR.		DAYLIGHT SENSOR.
	EXHAUST FAN (SELF SEALING).	INSTALLED AS PER B.C.A. 3.8.5. & TO COMPLY WITH A.S.1868.2.	
	COMBINATION EXHAUST FAN & LIGHT.		
	DIMMER SWITCH TO FITTING AS WIRED.		
	TWO WAY SWITCHING TO FITTING AS WIRED.		
POWER			
	DOUBLE POWER POINT @ 300MM.	UNLESS NOTED OTHERWISE	
	SINGLE POWER POINT @ 750MM.		
	DOUBLE POWER POINT @ 1150MM.		
	SGL WEATHER PROOF P.POINT @ 1150MM.		
	DOUBLE WEATHER PROOF P.POINT @ 1150MM.		
	SGL P.POINT @ 600MM ON SEP. CIRCUIT.		
	SGL P.POINT TO CEIL-REMOTE CONT. UNIT		
OTHER			
	S.M.O.K.E. DETECTOR.	APPROX. POSITION INSTALLED AS PER B.C.A. 3.7.2. & TO COMPLY WITH A.S.3786.	
	GAS BAYONET POINT @ 450mm		
	EXTERNAL METER BOX.		INTERNAL SWITCHBOARD.
	HOT WATER UNIT AS SPECIFIED		SOLAR HOT WATER UNIT AS SPECIFIED
	ROOF ACCESS		
SECURITY & COMMUNICATIONS			
	SPEAKER (IN CEILING)		ELECTRICAL CONDUIT
	TV POINT @ SPECIFIED HEIGHT		
	TELEPHONE POINT TO MATCH ADJOINING POWER POINT HEIGHT		
	MULTIMEDIA POINT TO MATCH ADJOINING POWER POINT HEIGHT		
	TERMINATION BOX		DISTRIBUTION HUB BOX
ALARM			
	ALARM KEYPAD		ALARM STROBE & SIREN
	ALARM CONTROL PANEL W/- SINGLE G.P.O. @ 2200MM AFL		
	ALARM SENSOR (TYPICALLY WALL MOUNTED)		
HEATING & COOLING			
	CEILING REGISTER (HEATING ONLY)		GAS DUCTED HEATING UNIT
	CEILING REGISTER (COOLING ONLY)		EVAP. COOLER UNIT
	RETURN AIR (WALL MOUNTED)		RETURN AIR (CEILING MOUNTED)
	AIR CONDITIONER HEAD		AIR CONDITIONER CONDENSER
	CEILING FAN WITHOUT LIGHT FITTING		CEILING FAN WITH LIGHT FITTING
NOTE: HEATING & COOLING REGISTERS INDICATED ON PLAN ARE SYMBOLIC ONLY. ACTUAL REGISTERS SHAPE & LOCATION PER MANUFACTURES RECOMENDATIONS.			
DUCTED VACUUM			
	DUCTED VACUUM SYSTEM @1500MM APPROX.		DUCTED VACUUM POINT @300MM
	DUCTED VACUUM KICKBOARD OUTLET (REFER INTERNALS FOR POSITION)		
IMPORTANT:			
- PROVIDE LIGHT POINT & SINGLE G.P.O. IN ROOF SPACE			
- WHERE INSTALLED, PROVIDE DIRECT POWER OUTLETS TO COOK TOP, RANGEHOOD, UNDER BENCH OVEN.			