



# The Wellington Collection

Lot 2234 | 156m<sup>2</sup>

Turn key Townhome

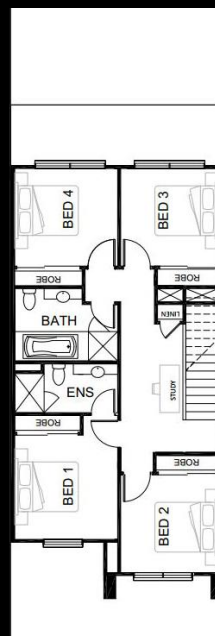
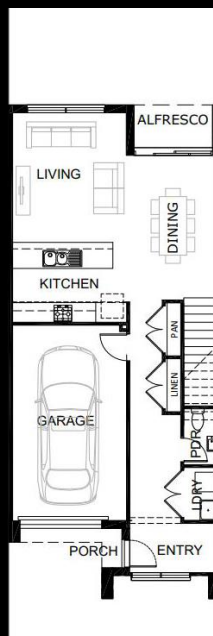
## \$419,000\*



**SIENNA  
HOMES**  
MAKING ROOM FOR LIFE

4    
 2.5    
 1

- Fixed site costs
- Contemporary architectural façade
- Stylish aluminum powder coated entry door with clear glass
- Stainless steel European appliances
- Choice of colour schemes curated by our Interior Designer
- Mixer taps to kitchen and bathrooms
- Franke stainless steel kitchen sink
- Laminate base and overhead cupboards to kitchen
- Laminate cabinetry to bathrooms with white inset basin
- Raised tile shower bases
- Continuous gas booster hot water service
- Automatic motorised garage door opener with 2 handsets.
- Timber paling fencing
- Letterbox



All photos and illustrations are representative and should be used as a guide only. This information is subject to change without prior notice, and while every reasonable effort is made to ensure current and accurate information is presented, National Pacific Properties Twyford Road Pty Ltd makes no guarantee in respect to the final outcome of any kind.

**CLYDE'S FRESH NEW MASTERPLANNED COMMUNITY**

eliston.com.au | 1300Eliston | info@eliston.com.au | 270 Wattersons Road, Clyde