

OCTAVE



LOT NO. 226

\$580,666



LAND SIZE: 294m²

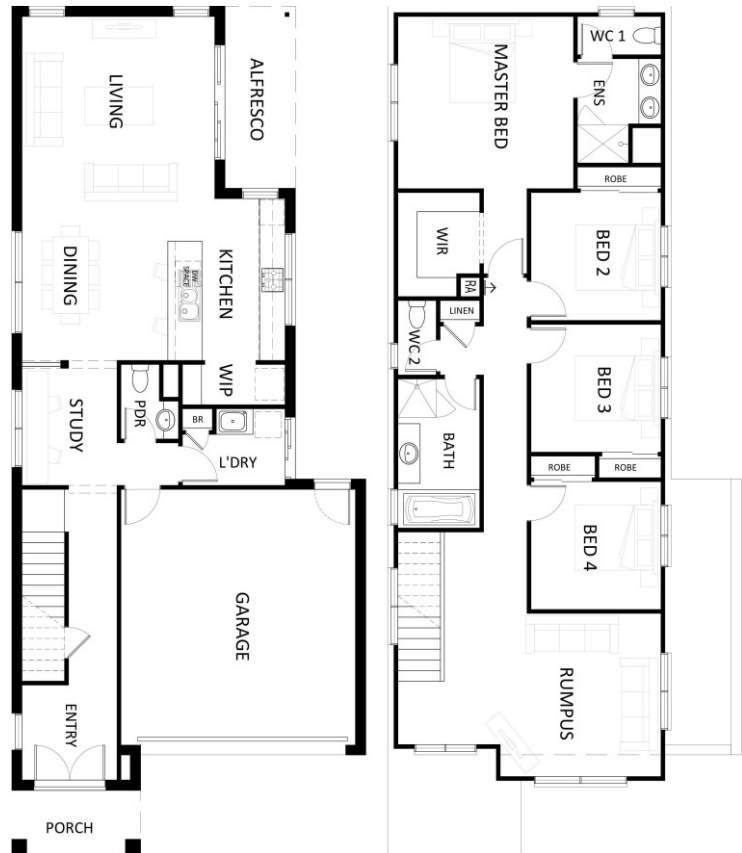
FRONTAGE: 10.5

Award winning Sienna Homes introduces the **Logan 26**. A well thought out floor plan, inclusive of a spacious open living and dining, well appointed gourmet kitchen complete with European appliances and four generously sized bedrooms including a master suite with walk in robe and ensuite.

INCLUSIONS:

- Site cost allowance
- Façade as shown
- Flooring throughout
- 600mm stainless steel oven
- 600mm stainless steel cooker
- Soft close hardware on kitchen cabinetry
- Double glazing to all windows
- Motorised garage door with remote control
- 18 months price guarantee

BUILDER:



*All packages are subject to developer and council approval. Please refer to the builder's documentation for home inclusions and pricing conditions. Purchasers are advised to confirm land price and availability prior to purchase and refer to contract documentation for all purchase relevant detail. The builder and developer reserve the right to withdraw or amend pricing, inclusions and promotion at any time without notice. Please speak with your sales consultant for further details. Pricing is current at time of publishing.

LAND SALES SUITE
1160 BALLARTO ROAD,
JUNCTION VILLAGE, VIC 3977
0499 987 355 | OCTAVEJUNCTIONVILLAGE.COM.AU

OPENING HOURS
MON TO FRI: 11AM - 5PM
SAT TO SUN: 11AM - 5PM

